

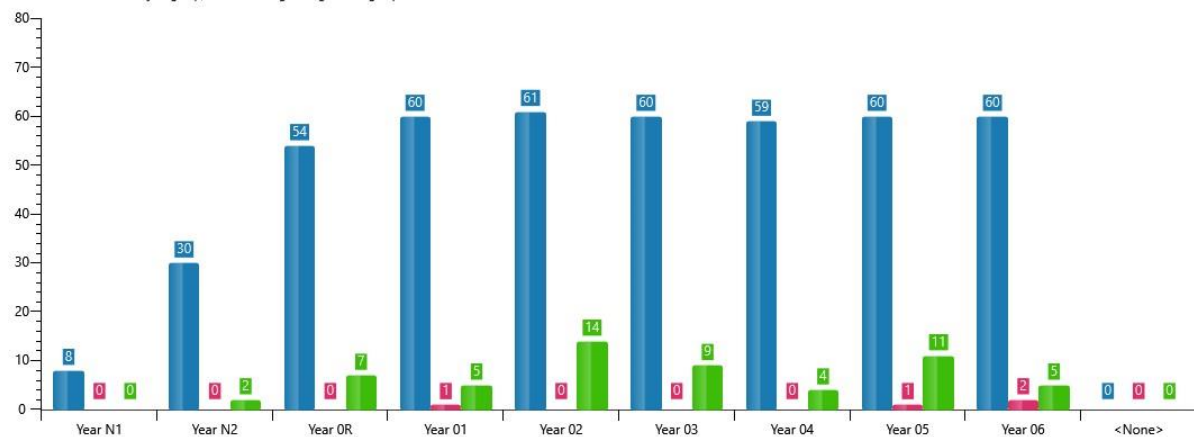
## SEN Review: East Stour Primary School

Date: Term 2 2019

	<b>Total SEN Support: (give number and % of roll)</b> National Average = 11.9% (Kent = 9.9%)	<b>Total SSEN/EHCP: (give number and % of roll)</b> National Average = 2.8% (Kent = 2.9%)
Total SEN	61 pupils =13.4% (452 pupils on roll)	4 pupils with EHC plan= 0.89%
Total monitoring/AEN		

### Student Totals by Year Group

A count of students in each year group, with drill through to registration group



Year Group	SEN	SEN Support without HNF	SEN Support with HNF	EHCP without HNF	EHCP with HNF
Nursery (38)	2	1	1		
Reception(54)	7	6	1		
Yr 1 (60)	6	5		1	
Yr 2 (61)	14	13	1		
Yr 3 (60)	8	9			
Yr 4 (59)	3	4			
Yr 5 (60)	12	11		1	
Yr 6 (60)	6	5		2	

Number of pupils	SEN	C & I	C& I and PP	C & L	C & L and PP	SEMH	SEMH and PP	PD, S & M	PD,S &M and PP
Nursery (38)	2	2							
Reception(54)	7	3	3						1
Yr 1 (60)	6	4					2		
Yr 2 (61)	14	3			1		2	1	
Yr 3 (60)	8	1		2	5				
Yr 4 (59)	3	1	1		1				
Yr 5 (60)	12	4	2	2	1	1		1	1
Yr 6 (60)	6	3	1	1			1		
<b>Total</b>	61	21	7	5	8	1	5	2	2

## Attendance

Average attendance SEN/non SEN 2017-18 = SEN = 93.6, Non SEN = 95.3

Average attendance for complete terms 2018-19 to date:

%	Term1	Term 2	Term 3	Term 4	Term 5	Term 6
SEN	94.9	92.3				
Non- SEN	96.7	95.5				

Number of pupils on part-time timetable

%	Term1	Term 2	Term 3	Term 4	Term 5	Term 6
SEN	2	2				
Non- SEN	0	0				

## Behaviour 2017-2018

Incidents (number of)	Term 1	Term 2	Term 3	Term 4	Term 5	Term 6
SEN	325	472				
Non-SEN	203	325				
Internal Exclusions	Term 1	Term 2	Term 3	Term 4	Term 5	Term 6
SEN	0	0				
Non-SEN	0	0				
Fixed term Exclusions	Term 1	Term 2	Term 3	Term 4	Term 5	Term 6
SEN	0	0				
Non-SEN	0	0				

## SEN Outcomes

Do all SEN pupils (including SEN Support) have SEN Outcomes that have been composed and agreed with parents and are linked to their particular area of need? (SEND CoP 6.39-6.43)

Yes /No

What percentage are on track to achieve their SEN Outcomes?

% on track to achieve Outcomes	All Outcomes	> 50%	<50%	None
Review 1			✓	
Review 2				
Review 3				

## SEN Achievement

<b>End of term 2</b> % ARE	<b>Number of pupils</b>		<b>Reading</b>		<b>Writing</b>		<b>Maths</b>	
	SEN	Non-SEN	SEN	Non-SEN	SEN	Non-SEN	SEN	Non-SEN
Nursery (38)	2	36						
Reception(54)	7	47						
Yr 1 (60)	6	54	33%	79%	33%	79%	50%	85%
Yr 2 (61)	14	47	31%	91%	31%	91%	31%	90%
Yr 3 (60)	8	52	33%	86%	33%	86%	33%	85%
Yr 4 (59)	3	56	25%	79%	25%	79%	50%	72%
Yr 5 (60)	12	48	17%	81%	17%	81%	33%	79%
Yr 6 (60)	6	54	14%	81%	14%	81%	14%	81%

<b>End of term 2</b> % expected (on target)Progress	<b>Number of pupils</b>		<b>Reading</b>		<b>Writing</b>		<b>Maths</b>	
	SEN	Non-SEN	SEN	Non-SEN	SEN	Non-SEN	SEN	Non-SEN
Nursery (38)	2	36						
Reception(54)	7	47						
Yr 1 (60)	6	54	50%	88%	25%	66%	40%	58%
Yr 2 (61)	14	47	61%	83%	46%	27%	53%	60%
Yr 3 (60)	8	52	33%	86%	63%	75%	67%	92%
Yr 4 (59)	3	56	33%	88%	75%	75%	66%	46%
Yr 5 (60)	12	48	33%	80%	56%	57%	30%	66%
Yr 6 (60)	6	54	58%	75%	28%	84%	57%	93%

### What is the impact of additional interventions?

See impact sheet for interventions.

- Measured through drop-ins/Intervention registers/Expectation of QFT shared in CPD/Monitoring walks
- New systems now in place to effectively measure impact.
- All interventions are now linked with area of need.
- Impact of interventions done through Provision mapping and impact analysis

### Quality of teaching

Comment on quality of teaching and impact on SEN – observations, work scrutiny etc.

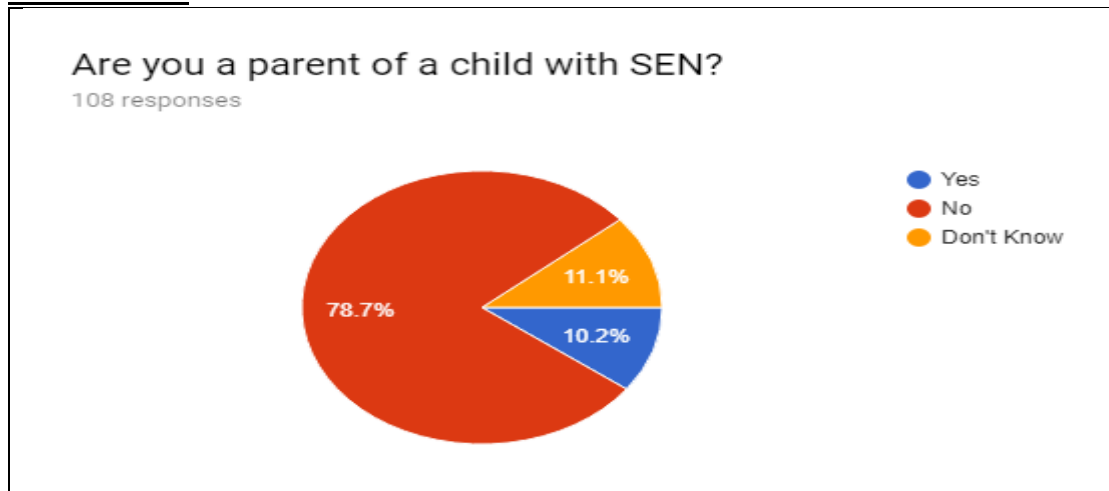
Comment on quality of delivery of additional interventions.

- **Observations/records suggest that majority of TAs deliver interventions regularly.**
- **Observations and training ensure that interventions are consistent**
- **SENCO/SENCO assistant monitors interventions looking at a record of interventions and observes.**
- **Uses example TAs to train and support others**
- **Delivery is more consistent**
- **Pastoral interventions are a key focus**

### Parental confidence in SEN provision

Outcome of any parental questionnaire and feedback from parent consultations, Annual Reviews etc.

**October 2018**



### SENCO role/responsibilities

Total contracted hours (per week)	
SENCO dedicated time	<b>J Charlesworth=4 days</b>
Other responsibilities (e.g. teaching, line management of TAs, deputy head, subject/phase leader)	<b>C Elliott- SENCO Admin assistant J Steele – SENCO intervention assistant</b>

**When was the last audit of teacher/TA skills carried out?**

- **Teacher audit – September 2018**
- **TA audit carried out – September 2018**

**Was this linked to the Mainstream Core Standards? **Yes**/ No**

**As a result of this audit what action was taken?**

- **Training (see below)**
- **Majority feel secure after the CPD on 4/9/18.**

<b>Training and date</b>	<b>Attendees (whole staff or individual)</b>
<b>Safeguarding 5th September 2018</b>	<b>Whole staff</b>
<b>Dyslexia Training</b>	<b>Whole staff – term 6 and Term 1 2018</b>
<b>GDPR Training</b>	<b>Whole staff</b>
<b>CTs and TAs – Language Through Colour</b>	<b>Lucy Holden – Term 6 2018</b>
<b>Emotion Coaching 5 Point Scale Training</b>	<b>Term 6 2018 – CTs Term 1 TAs</b>
<b>Supervision training</b>	<b>SLT/SMT/SENCO Team 7/11/18</b>